

Elgin Avenue, Kenton, HA3

£675,000

 4  2  2



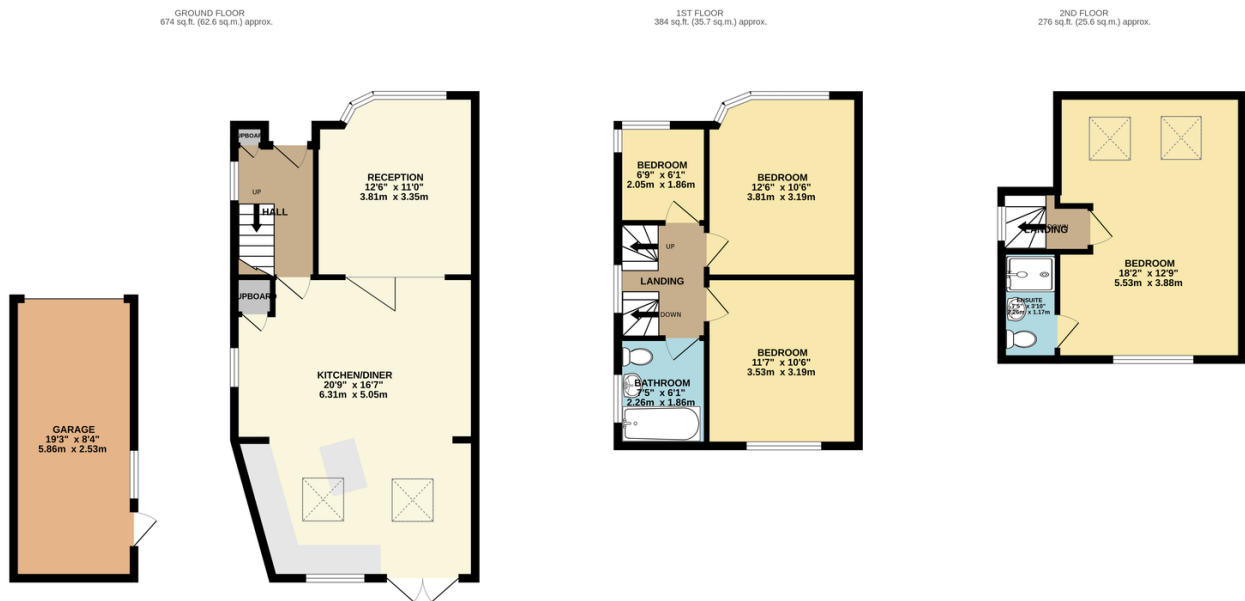
An extended 4 bedroom, 2 bathroom, semi-detached house located close to Belmont Circle for shops, transport and local schools.

The accommodation comprises open plan modern kitchen and dining area, leading to a separate living area. The first floor has 2 double bedrooms and 1 single and modern family bathroom and the top floor has the master bedroom with en suite shower room / wc.

Externally the property has off street parking to front, shared drive to side leading to a detached garage and approx 75' east facing rear garden.

Key Features

- 4 Bedrooms
- 2 Bathrooms
- Semi-detached house shared driveway
- Modern kitchen open plan to dining Room
- Modern family bathroom / wc
- En suite shower room to loft bedroom
- Off Street Parking to front
- Close to Belmont Circle
- Close to local Schools
- Modern condition throughout



TOTAL FLOOR AREA: 1334 sq.ft. (123.9 sq.m.) approx.

Whilst every attempt has been made to ensure the accuracy of the floorplan contained here, measurements of doors, windows, rooms and any other items are approximate and no responsibility is taken for any error, omission or mis-statement. This plan is for illustrative purposes only and should be used as such by any prospective purchaser. The services, systems and appliances shown have not been tested and no guarantee as to their operability or efficiency can be given.
Made with Metroplex ©2024